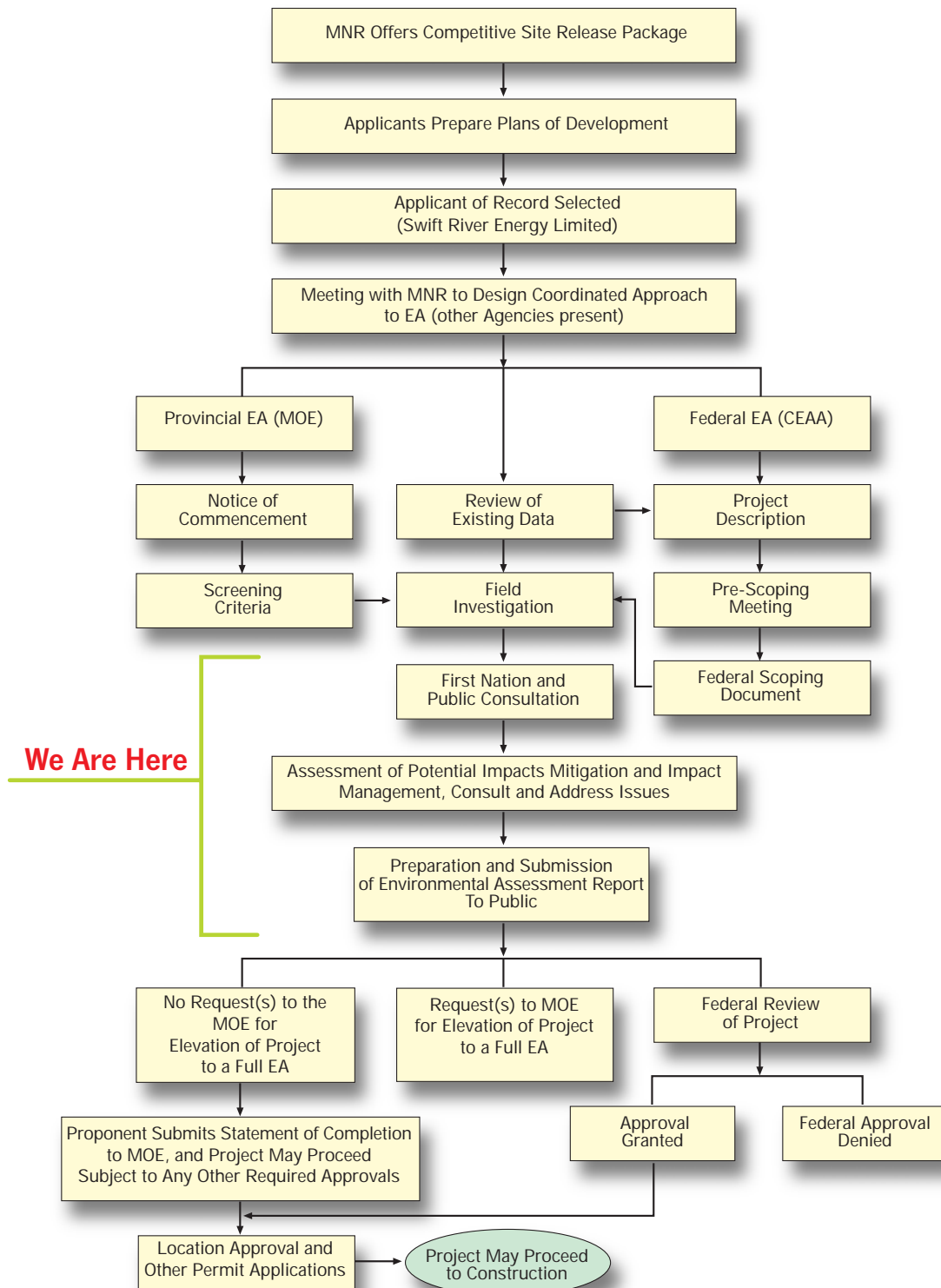


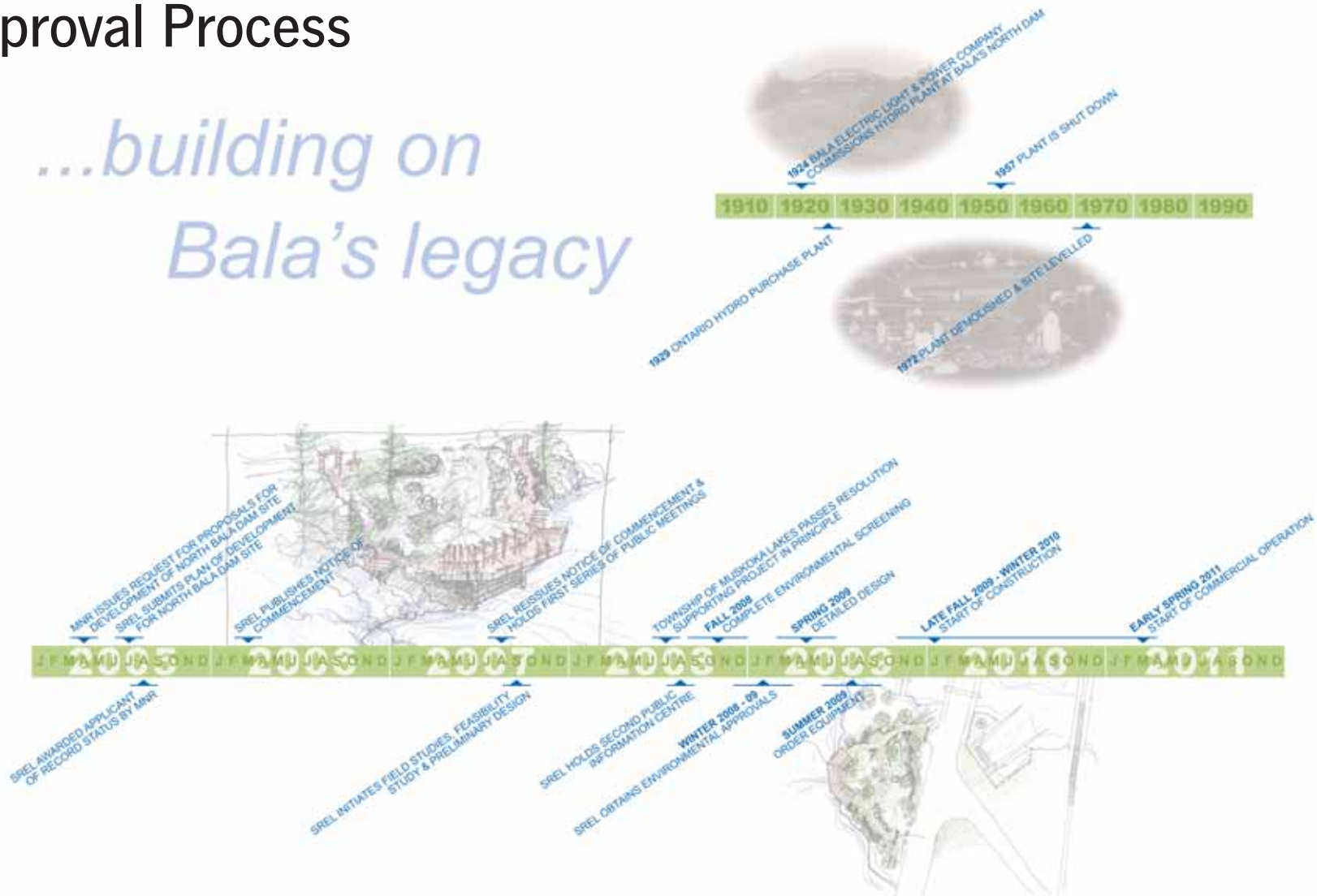
# Environmental Assessment / Screening Process



# Project Development / Approval Process



*...building on  
Bala's legacy*



# North Bala Small Hydro Project Environmental Screening Report

## Table of Contents

### 1. INTRODUCTION

- 1.1. PROJECT BACKGROUND
- 1.2. PROJECT DESCRIPTION & COMPONENTS
- 1.3. PROJECT LOCATION AND STUDY AREA
- 1.4. PURPOSE AND NEED
- 1.5. PROJECT ALTERNATIVES CONSIDERED
- 1.6. REGULATORY REQUIREMENTS

### 2. EXISTING ENVIRONMENT

- 2.1. NATURAL ENVIRONMENT
  - 2.1.1. Climate
  - 2.1.2. Physiography, Topography and Geology
  - 2.1.3. Hydrology
  - 2.1.4. Water Quality
  - 2.1.5. Fish Habitat and Fish Community
  - 2.1.6. Vegetation & Wildlife
- 2.2. SOCIOECONOMIC ENVIRONMENT
  - 2.2.1. Municipal Profile
  - 2.2.2. Land Use Policies and Zoning By-laws
  - 2.2.3. Local Land Use and Tenure
  - 2.2.4. Population and Economic Profile
    - 2.2.4.1. Recreational and Tourism
  - 2.2.5. Cultural / Heritage Resources and Archaeological Sites
  - 2.2.6. Infrastructure
  - 2.2.7. Existing Sound Levels
  - 2.2.8. Lands and Resources Used for Traditional Purposes by Aboriginal Persons
- 2.3. SUMMARY OF VALUED ECOSYSTEM COMPONENTS

### 3. EXISTING WATERPOWER FACILITIES AND OTHER WATER CONTROL STRUCTURES

### 4. PUBLIC, STAKEHOLDER, AGENCY & FIRST NATION CONSULTATION

- 4.2. STAKEHOLDER CONSULTATION
- 4.3. AGENCY CONSULTATION
- 4.4. FIRST NATION CONSULTATION
- 4.5. SUMMARY OF ISSUES ARISING FROM CONSULTATION
  - 4.5.1. Natural Environmental Issues
  - 4.5.2. Socioeconomic Environmental Issues

### 5. BASELINE DATA COLLECTION PROGRAM

- 5.1. DATA GAPS
  - 5.1.1. Natural Environment
  - 5.1.2. Socioeconomic
- 5.2. BASELINE DATA COLLECTION PROGRAM
  - 5.2.1. Natural Environment
  - 5.2.2. Socioeconomic Environment

### 6. IMPACT ASSESSMENT AND PROPOSED MITIGATION DURING PROJECT CONSTRUCTION

- 6.1. SOURCES OF EFFECTS
- 6.2. EFFECTS AND MITIGATION - NATURAL ENVIRONMENT
  - 6.2.1. Geology/Soils
  - 6.2.2. Air Quality
  - 6.2.3. Groundwater
  - 6.2.4. Hydrology
  - 6.2.5. Water Quality
  - 6.2.6. Aquatic Environment
  - 6.2.7. Terrestrial Environment
- 6.3. EFFECTS AND MITIGATION - SOCIO-ECONOMIC ENVIRONMENT
  - 6.3.1. Public Access
  - 6.3.2. Health and Safety
  - 6.3.3. Traffic
  - 6.3.4. Recreation and Tourism
  - 6.3.5. Local Residents
  - 6.3.6. Sound Levels
  - 6.3.7. Aesthetics and Signage
  - 6.3.8. Employment and Economic Opportunities
  - 6.3.9. Infrastructure
  - 6.3.10. Land Use
  - 6.3.11. Cultural/Heritage Resources and Archaeological Sites
  - 6.3.12. Lands and Resources Used for Traditional Purposes by First Nations
  - 6.3.13. Waste Management
- 6.4. SUMMARY OF IMPACTS AND MITIGATION DURING PROJECT CONSTRUCTION

### 7. EFFECT OF THE ENVIRONMENT ON THE PROJECT DURING CONSTRUCTION

- 7.1. PRECIPITATION AND FLOODING
- 7.2. EXTREME WINTER CONDITIONS
- 7.3. EXTREME SUMMER CONDITIONS
- 7.4. EARTHQUAKES
- 7.5. SUMMARY OF EFFECTS OF THE ENVIRONMENT ON THE PROJECT DURING CONSTRUCTION

### 8. IMPACT ASSESSMENT AND PROPOSED MITIGATION DURING FACILITY OPERATION

- 8.1. SOURCES OF EFFECTS
- 8.2. EFFECTS AND MITIGATION - NATURAL ENVIRONMENT
  - 8.2.1. Hydrology
  - 8.2.2. Groundwater
  - 8.2.3. Water Quality
  - 8.2.4. Aquatic Resources
  - 8.2.5. Terrestrial Biota
- 8.3. EFFECTS AND MITIGATION - SOCIOECONOMIC ENVIRONMENT
  - 8.3.1. Public Access
  - 8.3.2. Health and Safety
  - 8.3.3. Traffic
  - 8.3.4. Recreation and Tourism
  - 8.3.5. Local Residents
  - 8.3.6. Sound Levels
  - 8.3.7. Aesthetics and Signage
  - 8.3.8. Employment and Economic Opportunities
  - 8.3.9. Infrastructure
  - 8.3.10. Land Use
    - 8.3.11. Cultural/Heritage Resources and Archaeological Sites
    - 8.3.12. Lands and Resources Used for Traditional Purposes by First Nations
    - 8.3.13. Waste Management
- 8.4. FACILITY DECOMMISSIONING
- 8.5. SUMMARY OF OPERATIONAL EFFECTS AND MITIGATION

### 9. CUMULATIVE EFFECTS ASSESSMENT

- 9.1. CUMULATIVE EFFECTS
  - 9.1.1. Past Activities
  - 9.1.2. Present Activities
  - 9.1.3. Future Activities/Projects
- 9.2. SIGNIFICANCE OF CUMULATIVE ENVIRONMENTAL EFFECTS

### 10. PROPOSED OPERATING PLAN

### 11. ENVIRONMENTAL MONITORING PROGRAMS

- 11.1. PRE-CONSTRUCTION CHECKLIST
- 11.2. CONSTRUCTION MONITORING
- 11.3. OPERATIONAL MONITORING

### 12. ENVIRONMENTAL PERMITS AND APPROVALS

### 13. SCREENING CONCLUSION

### 14. AMENDMENT TO EXISTING MUSKOKA RIVER WATER MANAGEMENT PLAN